

# EPIC operations status 2022

---

Pedro Calderón Riaño

ESA ESAC

29/04/2022

ESA UNCLASSIFIED – For ESA Official Use Only



A decorative graphic consisting of green circuit lines with circular nodes, extending horizontally from the left and right sides of the central black box.

# GENERAL STATUS

THE EPIC INSTRUMENTS (MOS1, MOS2, PN AND RM)  
CONTINUE WORKING FINE.

# INCIDENTS

- Almost nothing;
  - Two PN EPEA software auto reboots (on different quadrants).

- One case of PN B powered ON by a SEU (LCL trip on).

This was confusing until PN A and PN B were powered OFF and properly recovered.

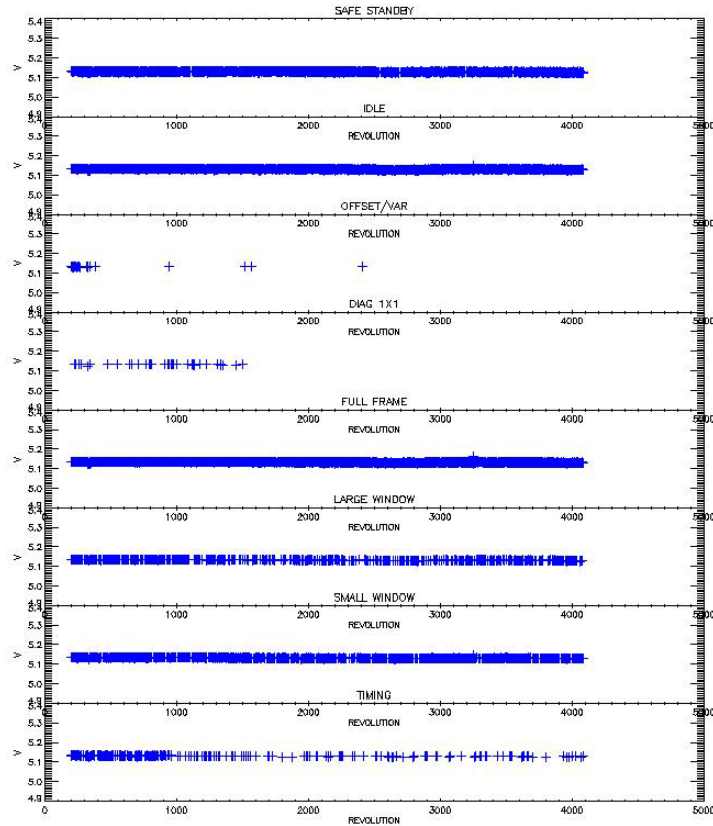
- One case of RM B powered ON by SEU

This is the first time than happens in all the mission. And as RM A and B are fully independent electronics units, they both were working on parallel until the situation was returned to nominal.

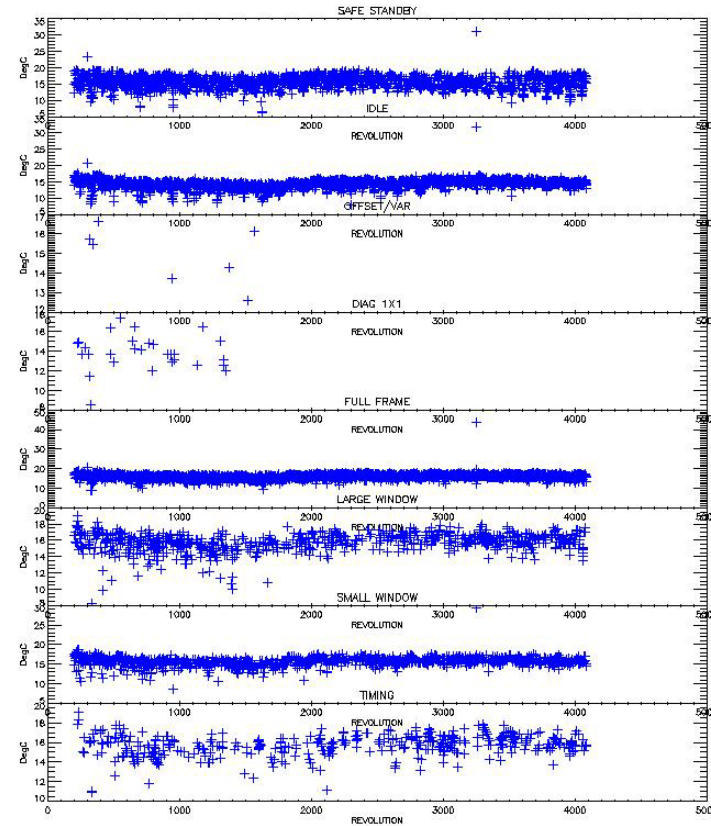


# TREND ANALYSIS AND MONITORING

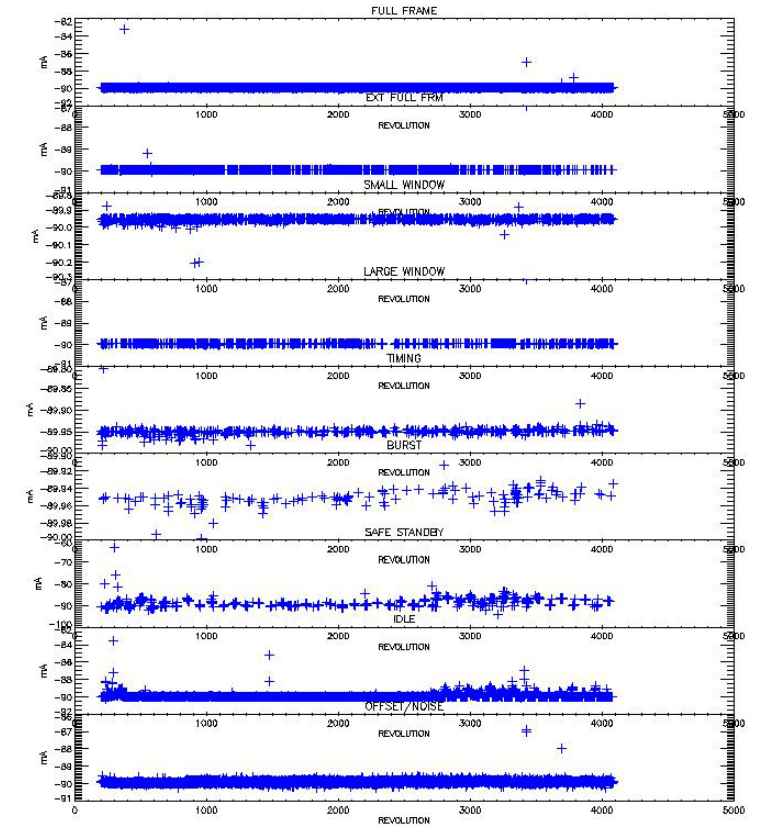
E1004 D +5V PW SUPPLY (Rev: 200-4086)



K1090 C EMCR TEMP 2 (Rev: 200-4086)

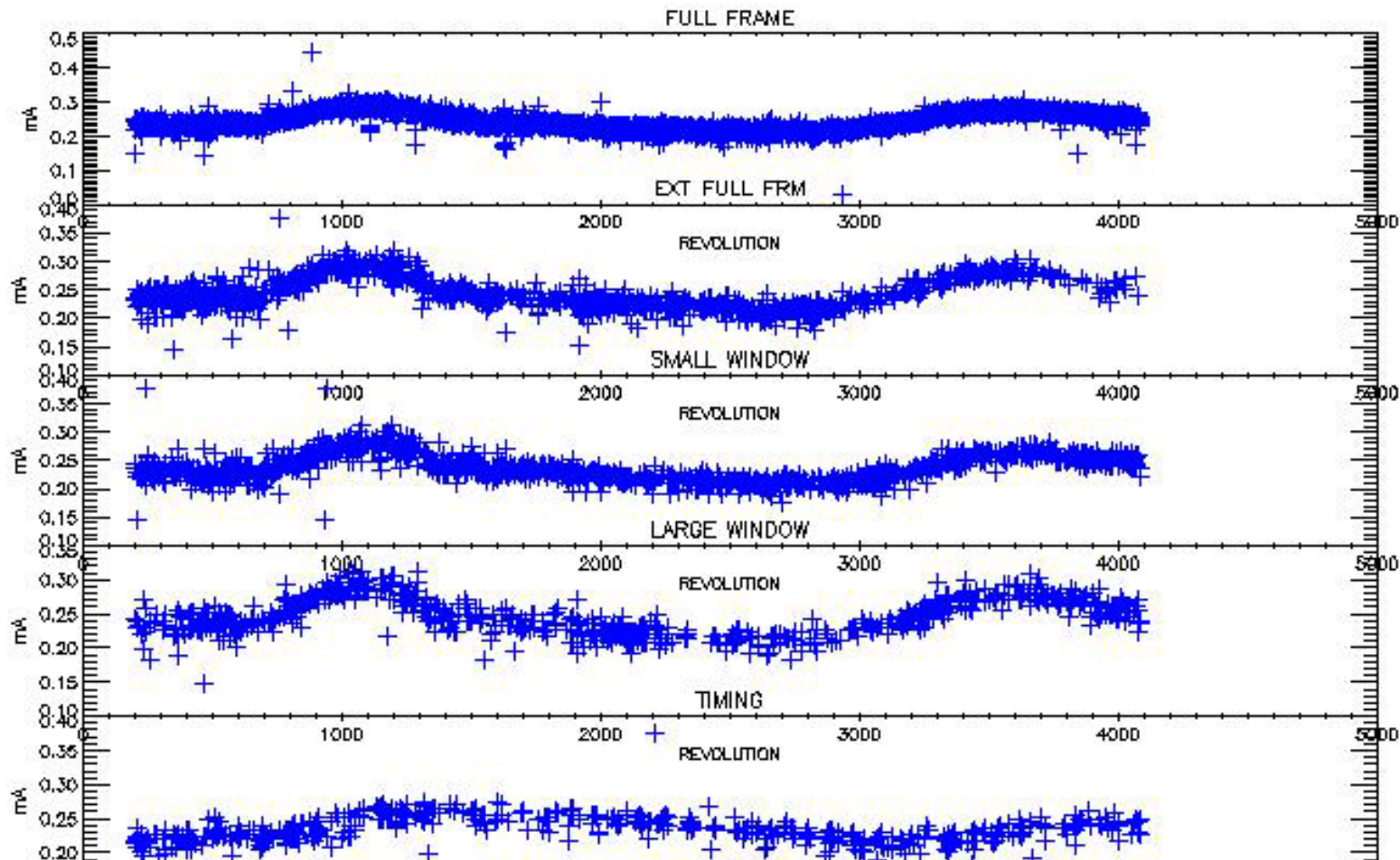


F1128 H CE TIMPFPP (Rev: 200-4086)



... NOT ALWAYS STRAIGHT...

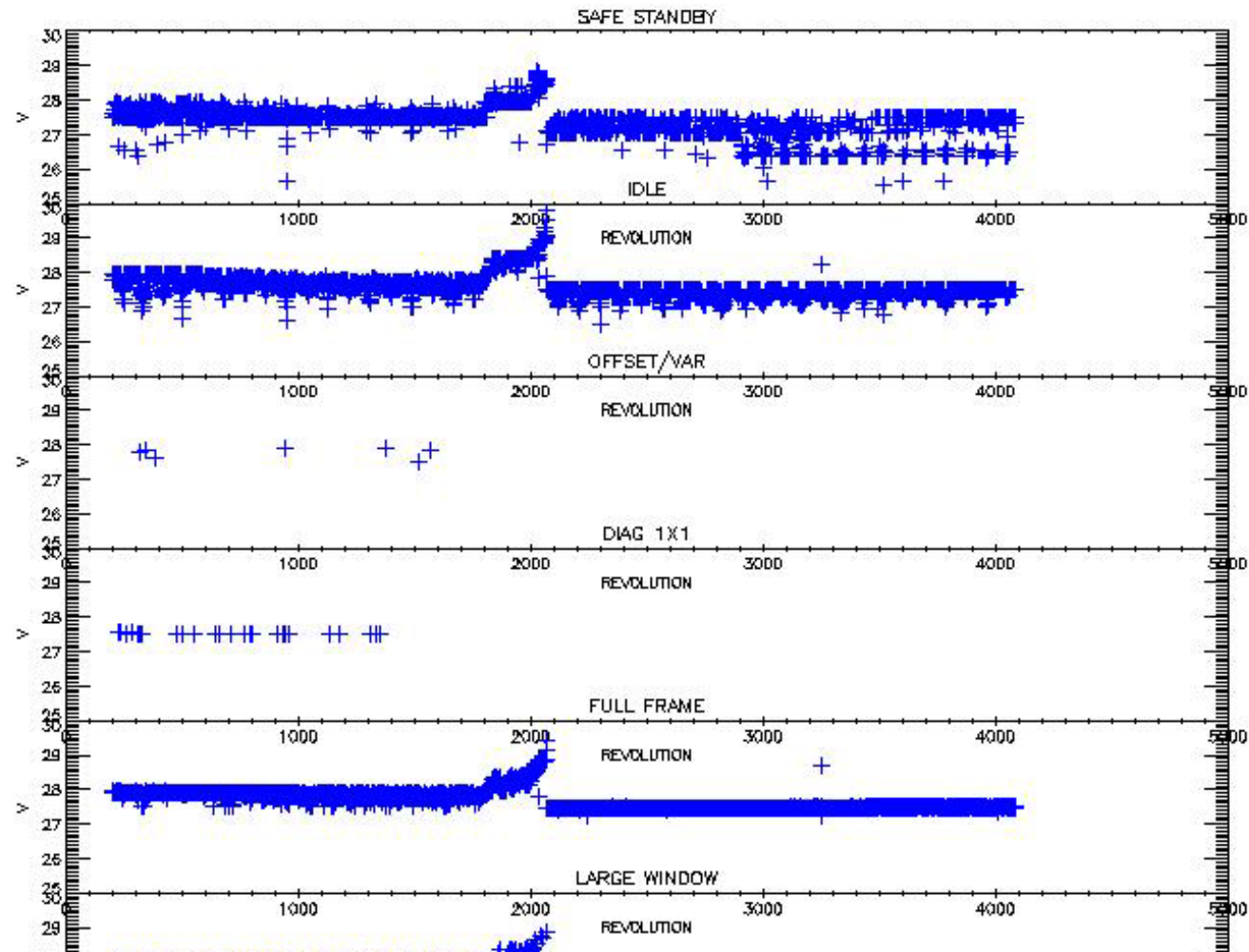
F1670 E C1 IIS (Rev: 200-4086)





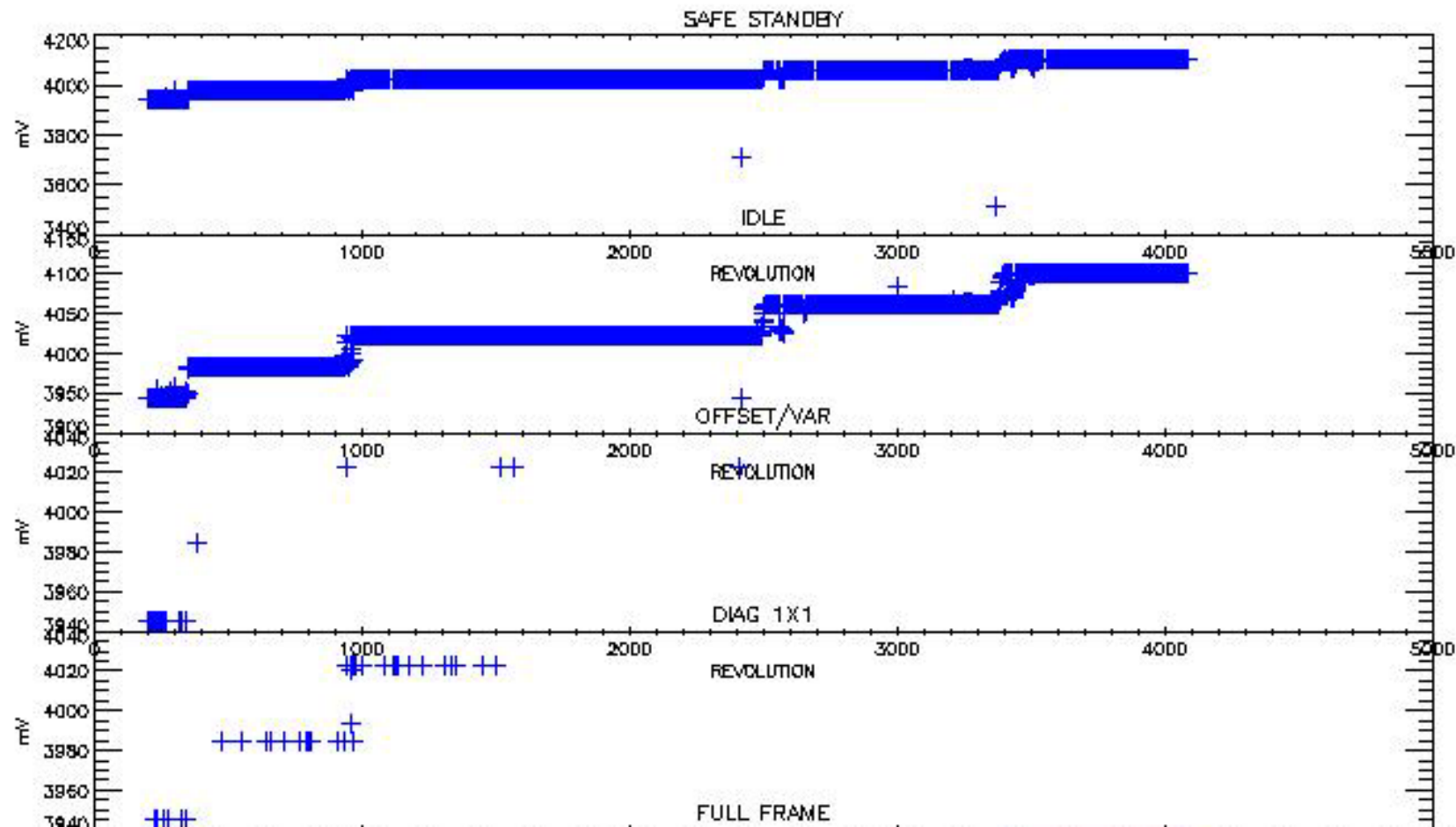
MOS 2 B DIGITAL ELECTRONIC IS NOW BEING THE OPERATIONAL UNIT ALONG MORE TIME THAN THE ORIGINAL MOS 2 A DIGITAL UNIT WAS (SEE THE PEAK OF THE FAILURE AND CHANGE OF UNIT ON 2011, ON THE MID OF THE TIME SERIE).

K1083 C EMAE +32V LINE (Rev: 200-4086)



# BUT THE AGEING NEVER STOP ...

E1313 A RAD MON FET2 (Rev: 200-4086)



# ROUTINE OPERATIONS

- Two eclipse seasons, with nothing new
- Two periodic resynchronizations, just on time
- And a lot of science observations performed  
(very efficient, but bored to report).



# CHANGES IN OPERATIONS

Really nothing relevant. Mostly clarifications and correction of typos...

## “IF IT WORKS, DON’T TOUCH IT”

But if it do not works, fix it

# CHANGES IN OPERATIONS

For mention some changes ...

- RM recovery its fully automated, and now cover all the known cases that do not require investigation from the experts.
- A project for automate the recovery of the science operations when the radiation return with in limits is started.
  - ✓ So far the system alert to the Spacon for start (still manually) the recovery (that ones started its automated) in the case that the radiation from the RM returned with in limits.
  - ✓ Also internal flags for detect the same in the radiation calculated by all the others instruments are being tested.

# QUESTIONS?

