

EPIC operations status 2025

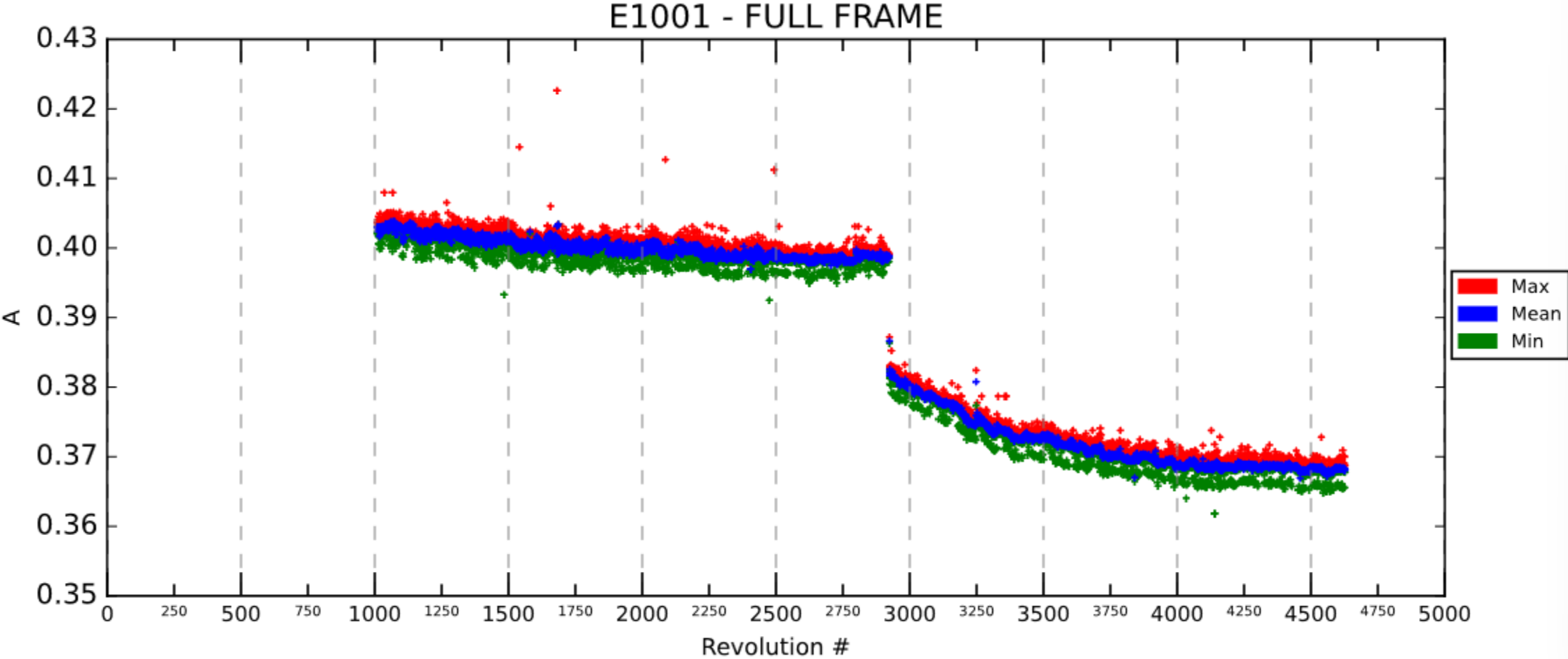
Pedro Calderon Riano

ESA ESAC

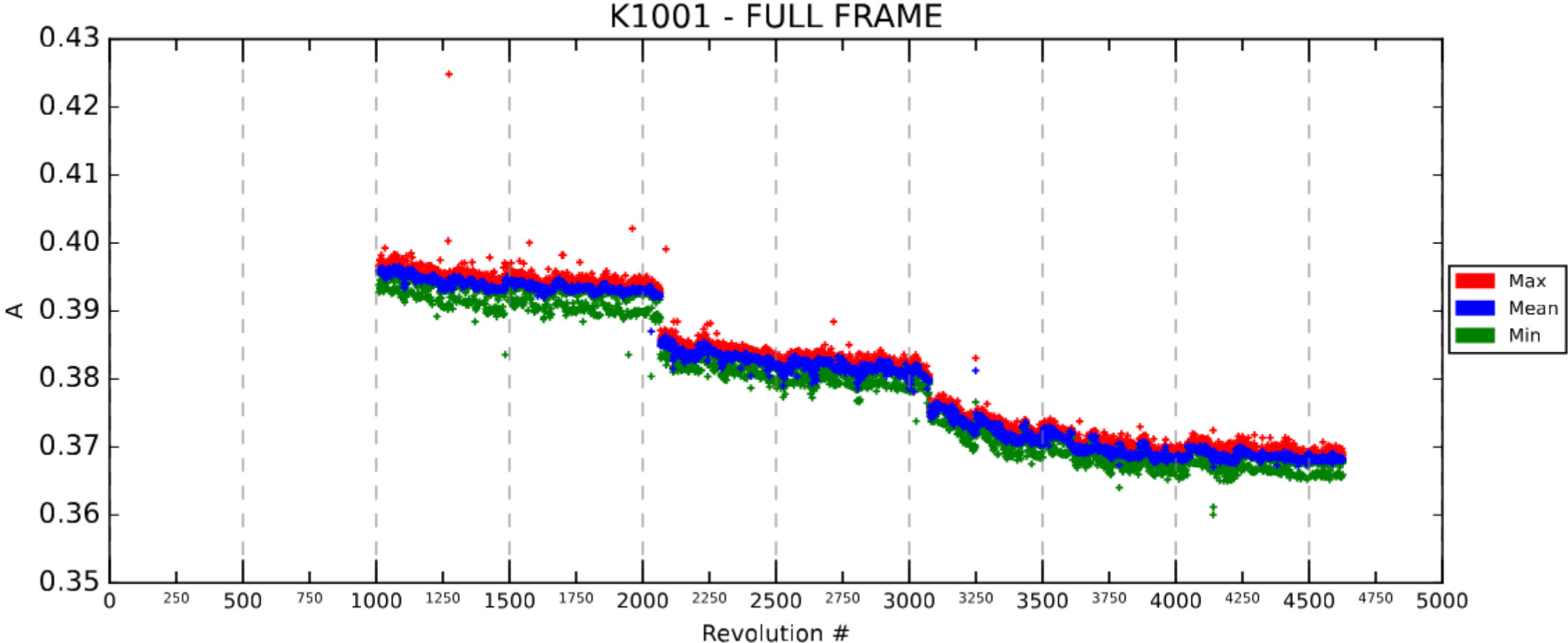
14/03/2025

- The instruments continue having no problems
 - Nice 😊
- Since last year had happened ...
 - One MOS 2 EMCR autoreboot to ROM sw version
 - Some changes in operations, mainly new nominal BRAT (maximum TLM) definition and reduced FW rotations .

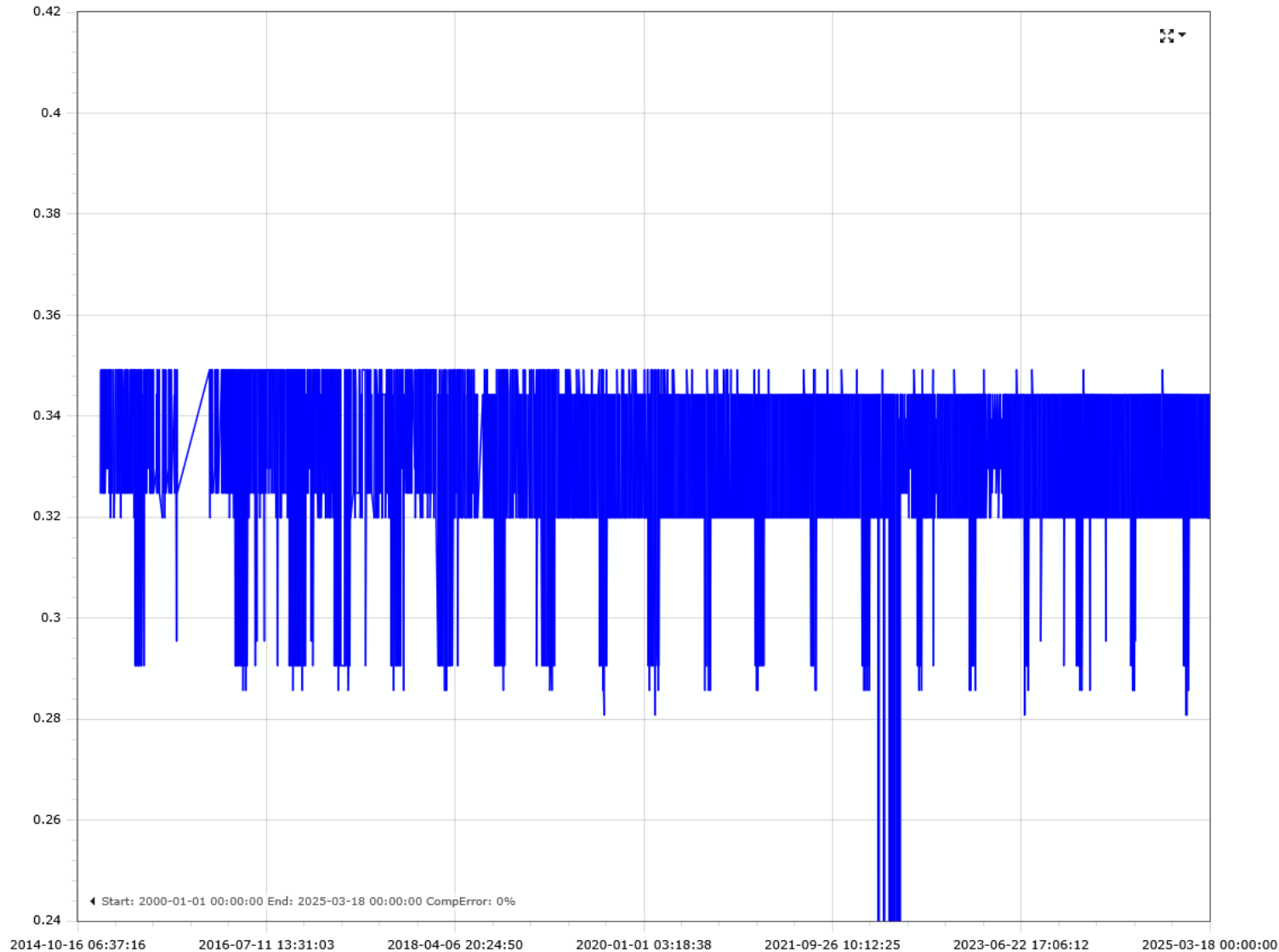
MOS 1 total current when observing in Full Frame mode



MOS 2 total current when observing in Full Frame mode



PN total current when observing in Full Frame mode



F1001 PN power consumption (input current in Amps) from Jan 2015 to March 2025.

Source: MOC Ares
(no available at SOC Ares, TDRS)

Other similar ATAT results in the [web](#).

Update of max TLM bandwidth for the EPICs

From ODB version 7.21, 24-Oct-24, rev 4556, the maximum TLM bandwidth usable by each one of the EPIC instruments (BRAT) was modified

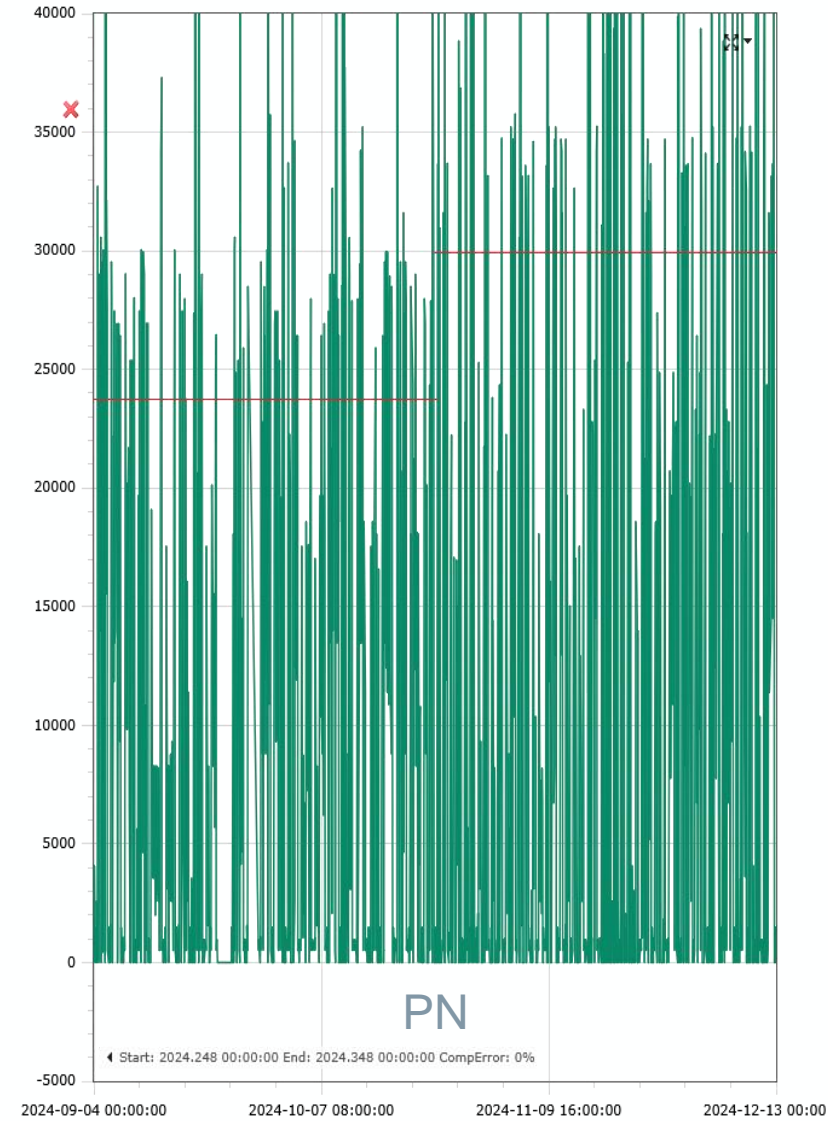
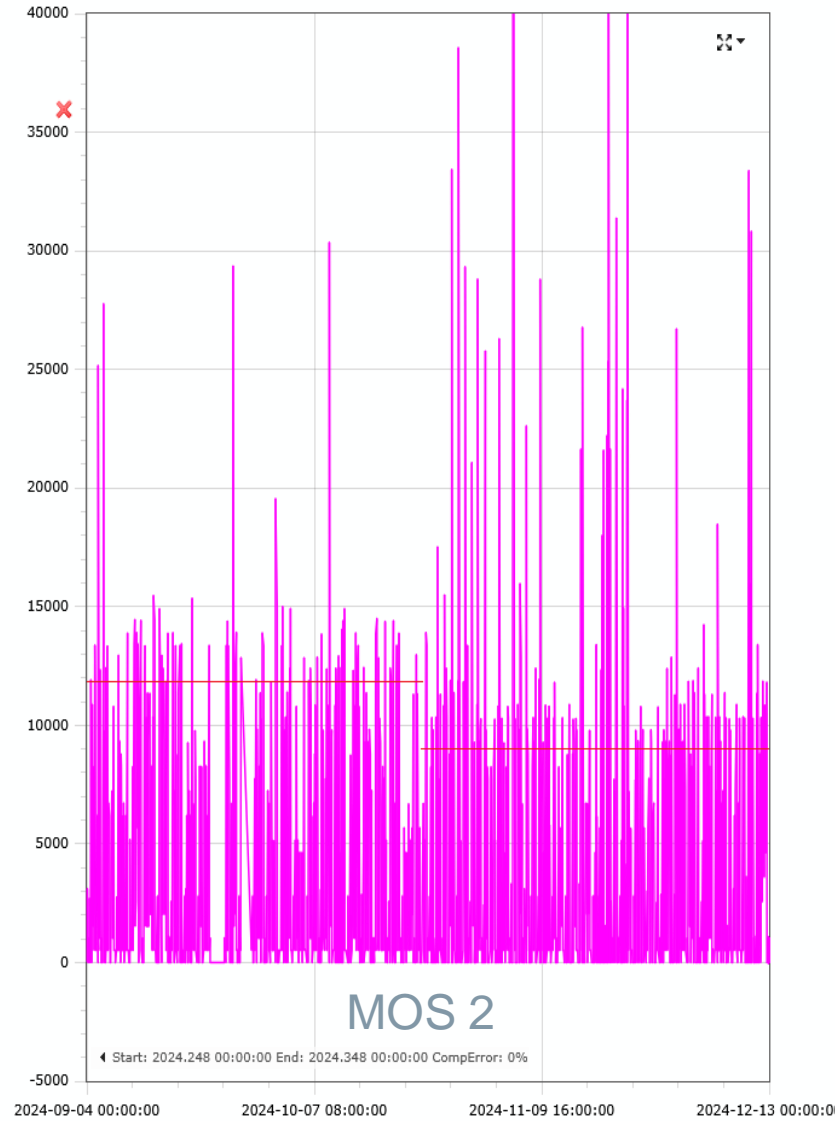
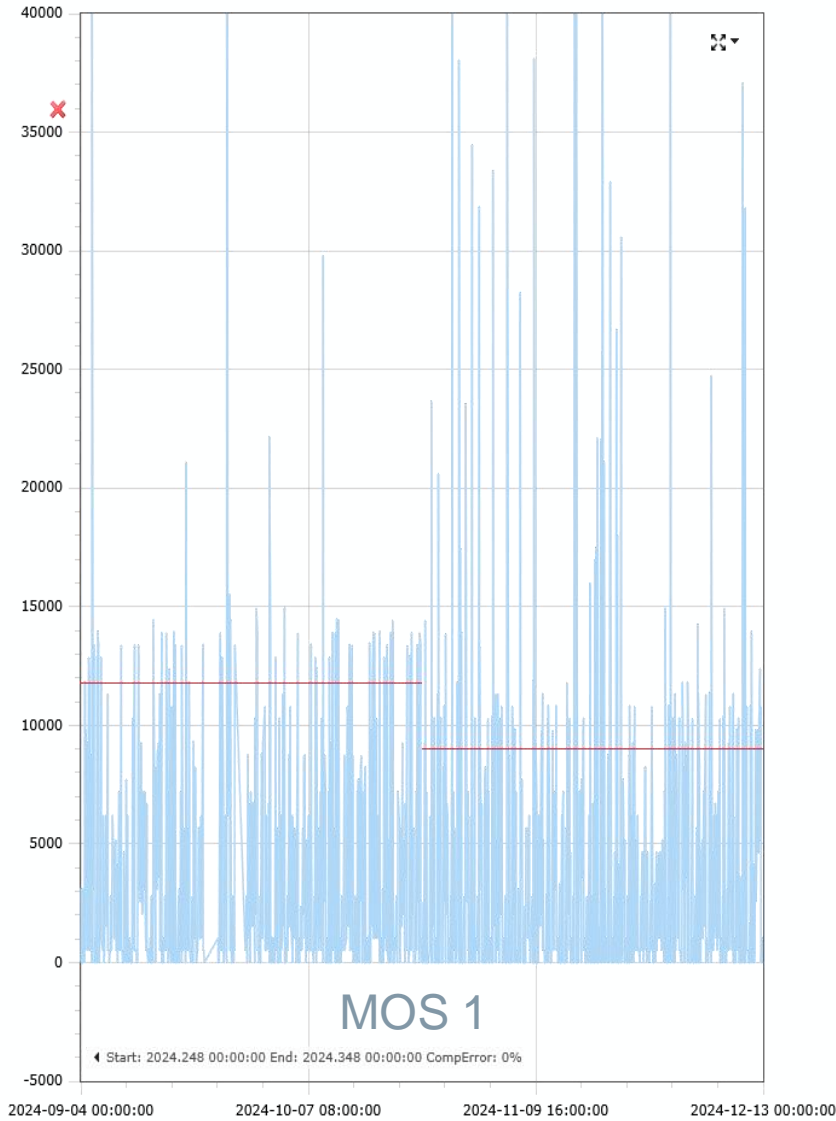
Before: MOS1 12 kbps, MOS2 12 kbps, PN 24 kbps

After: MOS1 **9** kbps, MOS2 **9** kbps, PN **30** kbps

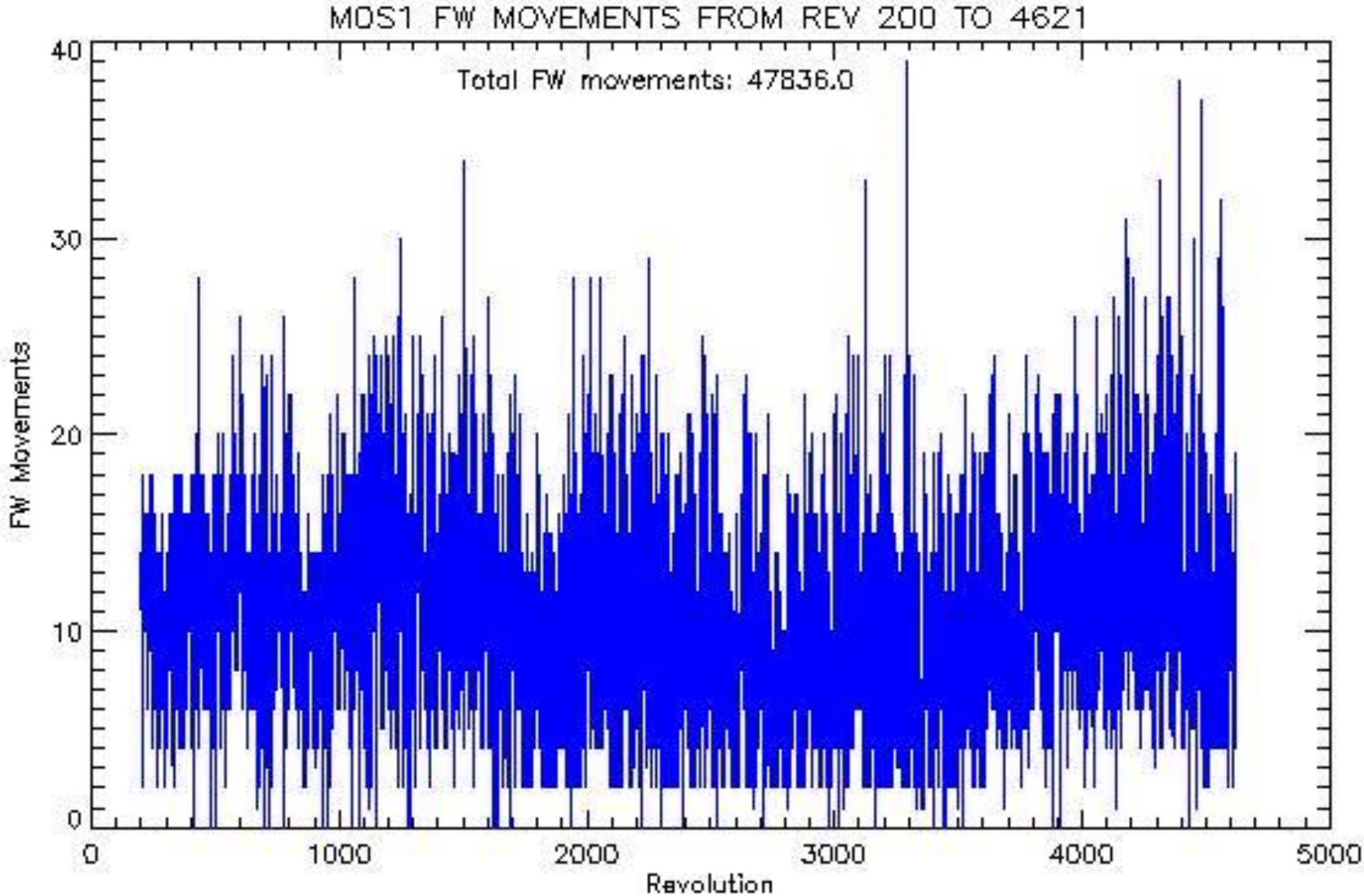
The driven was reduce the number of times that PN enter in counting mode, loosing scientific data.
But its too soon as for see a significative different on them.

On the next slide are show the bandwidth used on the 50 days before and after the change.

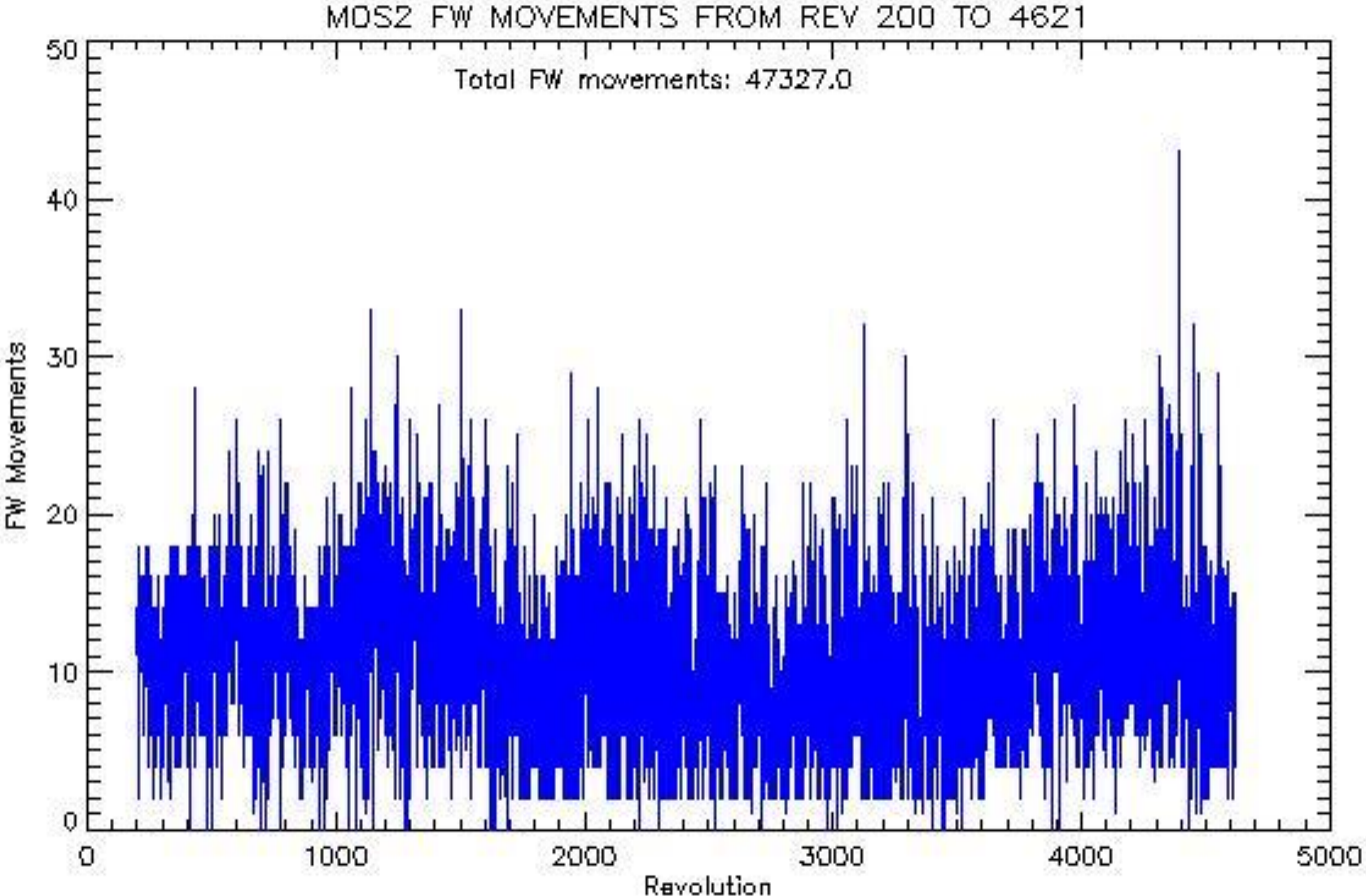
Bandwidth used trough the change



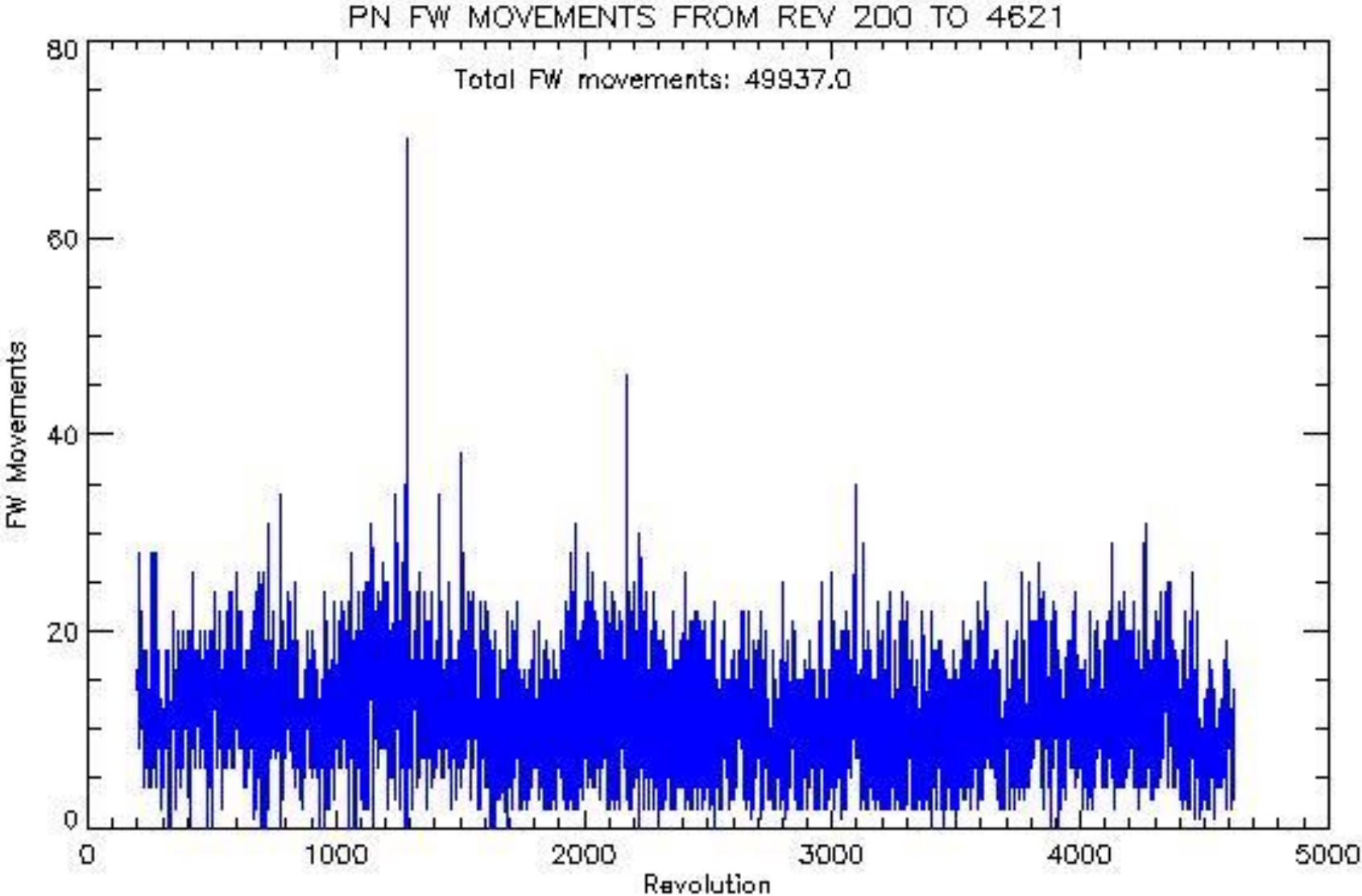
Reduction of Filter Wheel revolutions, MOS 1



Reduction of Filter Wheel revolutions, MOS 2



Reduction of Filter Wheel revolutions, PN



- Fix misbehaviours of the ground (MOIS) automation.
 - Adaptation to the changes in orbit and radiation patterns

 - Improvements and common cases still not automated:
 - Recover from Safe Standby
 - Rejoins after slews end late
 - Deal with ground stations and TC fails
 - Etc.
- Now being prepared, under the name of Automation 4.0

That's all, Questions ?

